

Genetic diversity analysis of forty-three insertion/deletion loci for forensic individual identification in Han Chinese from Beijing based on a novel panel

Congying ZHAO¹, Jinlong YANG², Hui XU¹, Shuyan MEI¹, Yating FANG¹, Qiong LAN¹, Yajun DENG²✉, Bofeng ZHU^{1,3}✉

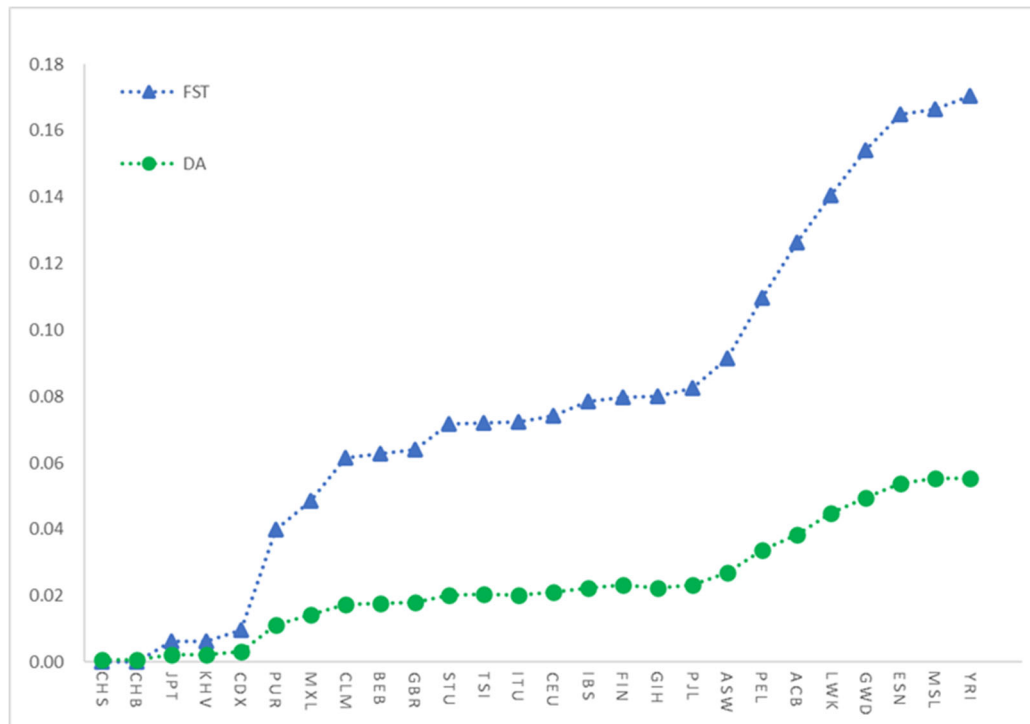


Fig. S2 The line charts showing the F_{ST} and D_A values between Han Chinese from Beijing and 26 reference populations based on 19 overlapped InDel loci.